



桂林理工大学

**GUILIN UNIVERSITY OF TECHNOLOGY**



## Location of the GUT

China



◆ South of China

◆ In a Tourist City- Guilin

# What is ***GUILIN*** like?

- ◆ Famous for its beautiful sceneries
- ◆ A dynamic tourist city
- ◆ More than 40 million tourists yearly
- ◆ Internationalized with multi-culture
- ◆ Peaceful and Friendly locals with smiles
- ◆ Secure and beautiful environment
- ◆ World-wide convenient transportation

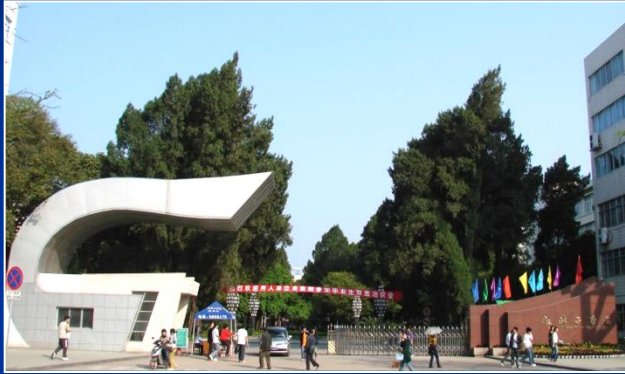
# What is GUILIN like?



What is GUILIN like?



# Guilin University of Technology in Brief



- ◆ **Founded in 1956, a public state-run university**
- ◆ **4 Campus, total around 660 Acres**
- ◆ **19 Faculties with 1,700 Teachers and Staffs**
- ◆ **Top university in Southern China**
- ◆ **Good learning environment with excellent students services**

## **GUT in Brief - *Students***

- ◆ **23,000 Undergraduate Students**
- ◆ **2,000 Postgraduate Students**
- ◆ **750 International Students from 40 countries**



## **GUT in Brief - Programmes**

- ◆ **Chinese Language Training Programmes, 1-3 years**
- ◆ **Bachelor's Degree: 80 Programmes, 4-5 years**
- ◆ **Master's Degree: 40 Programmes, 2-3 years**
- ◆ **Ph.D: 3 Programmes, 3 years;**





## **GUT in Brief - *Faculties***

- 1 Civil Engineering and Architecture**
- 2 Environment Science and Engineering**
- 3 Information Science and Engineering**
- 4 Earth Sciences**
- 5 Mechanical and Control Engineering**
- 6 Material Science and Engineering**
- 7 Chemistry and Bioengineering**
- 8 Geomatics and Geoinformation**
- 9 Humanities and Social Sciences**
- 10 Foreign Studies**
- 11 Mathematic Sciences**
- 12 Business School**
- 13 Tourism School**
- 14 School of Art Design**
- 15 Vocational-Technical Education**
- 16 International Education**



# **GUT in Brief - *Facilities***



# **GUT in Brief – Classrooms & Seminars**



# **GUT in Brief – Classrooms & Seminars**



# GUT in Brief – Classrooms & Seminars



# GUT in Brief – Classrooms & Seminars



# GUT in Brief – *Sports*



# GUT in Brief – On-campus Canteens and Shops





# GUT in Brief – International *Students*



# **GUT in Brief – International *Students***



# GUT in Brief – International *Students*



# GUT in Brief – International Students



# **GUT in Brief – *International Students***



# GUT in Brief – *International Students*



# **GUT in Brief – *International Students***



# GUT in Brief – *International Students*





# **Study at GUT– Chinese Language Courses**

## **Chinese Language Courses (4 Levels)**

- ◆ **Beginners**
- ◆ **Elementary**
- ◆ **Intermediate**
- ◆ **Advanced**

**Academic Year:**

**First semester: March --- July**

**Second semester: September --- January**

**Application time:**

**Spring semester intake: Before January 15th**

**Autumn semester intake: Before July 15th**



# **Study at GUT– Undergraduate Programmes**

## Bachelor's Degree Programmes (4-5 years)

- ◆ Civil Engineering, Architecture (5ys), Engineering Management
- ◆ Urban Planning (5ys), Environment Engineering
- ◆ Software, Networks, Mechanical Design, Automation
- ◆ Animation, Fashion Design, Visual Design
- ◆ Tourism, Hospitality, Business, International Economy and Trade
- ◆ .....



# **Study at GUT– *Postgraduate Programmes***

## **Master's Degree Programmes (2-3 years)**

- ◆ **Municipal Engineering, Environment Science**
- ◆ **Landscape Architecture, Civil Engineering, Geology**
- ◆ **Material Science, Chemistry**
- ◆ **Master of Business Administration (MBA – 2 years)**
- ◆ **Master of Tourism Administration (MTA – 2 years)**
- ◆ **.....**



# Study at GUT– *PH.D Programmes*

## Ph.D Degree Programmes (3 years)

- ◆ Geological Resources and Geological Engineering
- ◆ Environmental Science and Engineering
- ◆ Materials Science and Engineering



# **Study at GUT**—*Degree courses intake*

## Application time

- ◆ Each year before July 15th

## Semester begins

- ◆ Each year in September

## Accommodation

- ◆ On campus of GUT



# Study at GUT– Tuitions fees and costs

Programmes	Tuition Fee
Chinese Language Training Programmes	7,000 CNY / semester
	11,800 CNY / academic year
Undergraduate Programmes	13,800 CNY / academic year
Postgraduate Programmes	16,000 CNY / academic year
Ph.D Programmes	18,800 CNY / academic year

\* The above amount is subject to change by current admission policy of GUT.

## Other fees

- ◆ Application & Registration fee: 350 CNY
- ◆ Health Check: 300 CNY
- ◆ Residence Permit: 400 CNY / within one year
- ◆ Life Insurance: 800 CNY/ year
- ◆ Textbooks: about 300 CNY/ year



# Study at GUT-- Accommodation

## International Apartment for *One Year*

	Single Room	2-Bed Room	3-Bed Room	4-Bed Room
◆ 17#	N/A	5,200 CNY	N/A	N/A
◆ 18#	N/A	4,200 CNY	3,000 CNY	2,200 CNY
◆ 19#	N/A	5,200 CNY	3,600 CNY	2,700 CNY

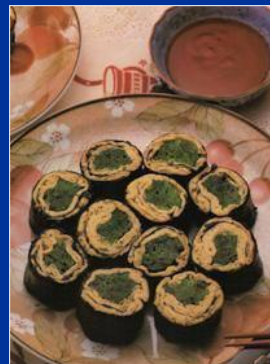
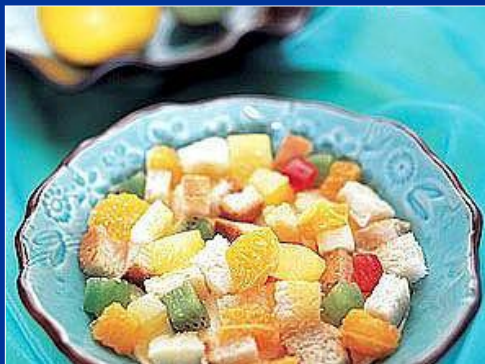


All room are with Air-conditioner, internet, hot water, separate toilet, wardrobes, tables and chairs, public laundries....

# Study at GUT– *Daily Costs*

Food costs: **20 – 30 CNY / Day**

Other costs: **10 – 30 CNY / Day**





# Study at GUT – International Apartment



# **Study at GUT– *International Apartment***

## **Building 17# and 18#**



# **Study at GUT– *International Apartment***

## **Building 19#**



# **Study at GUT– *International Apartment***



**4-Bed Room**

# Study at GUT– *International Apartment*



**3-Bed Room**

# **Study at GUT– *International Apartment***



**2-Bed Room**

# **Study at GUT– *International Apartment***



**The new International Apartment will be used in March 2018.**



## **Study at GUT—*Transportation***



**Convenient flights, high-speed trains and buses to the main cities in China and abroad.**





# **Welcome to Guilin University of Technology**

**Website: [www.glut.edu.cn](http://www.glut.edu.cn)(Chinese Version)**

**[www. en.glut.edu.cn](http://www.en.glut.edu.cn)(English Version)**

**Tel :+86-773-5893125**

**Fax:+86-773-5895613**

**Email: [cie@glut.edu.cn](mailto:cie@glut.edu.cn)**