

Hello!



**SAMORZĄD
STUDENCKI**
POLITECHNIKI WROCŁAWSKIEJ

EPS



Student's Rights & Obligations



RIGHTS



students are entitled to

OBLIGATIONS



students are obliged to meet
them

Moment of acquisition?

Upon taking the oath

Origin of rights

- The Law on Higher Education and Science
- University statute
- Study regulations
- Detailed rules set out within the University units



RIGHTS

- Gaining knowledge, skills and social competences
- The transfer and recognition of ECTS points
- Pursue an individual study plan
- Change the major field of study
- Obtain leave of absence from classes
- Retake certain classes
- Obtain student aid benefits
- Access graded papers

OBLIAGCTIONS

- Attend classes
- Complete courses and internships
- Pay study fees if needed
- Respond to correspondence concerning studies
- Follow the regulations
- Protect personal data



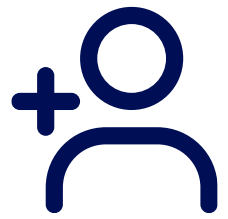
Fees during studies

- The amount of fees must be determined **before** recruitment begins.
- **No new** fees can be introduced.
- Possibility to increase fees once per academic year, **not more than by the inflation rate** and **not more than 30%** (from the 2023/2024 academic year)
- The fee for confirming learning outcomes **can not** exceed its costs **by more than 20%**.



Presentation plan

1



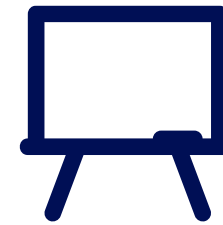
**Beginning
of studies**

2



**First
weeks of
studies**

3



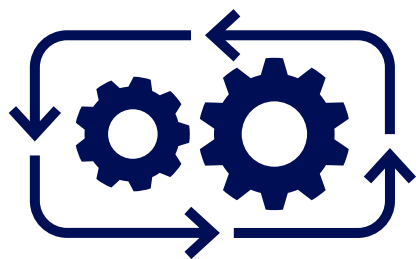
**During
studies**

4



**First
exams**

5



**Beginning
of second
year**

6



**Another
semesters**

7



**End of
studies**

**Welcome
to
University!**



Where to find the most important information?



<https://pwr.edu.pl/en/>



University/Faculty/Dean's office/Students' union Facebook

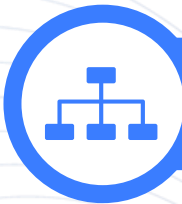


USOS system



What to know about University?

Currently at the Wrocław University of Science and Technology at 14 faculties and 3 branches, under the supervision of 2 198 academic teachers studies: 23 817 students and 307 PhD students. We also have 1 223 foreign students from over 60 countries around the world.

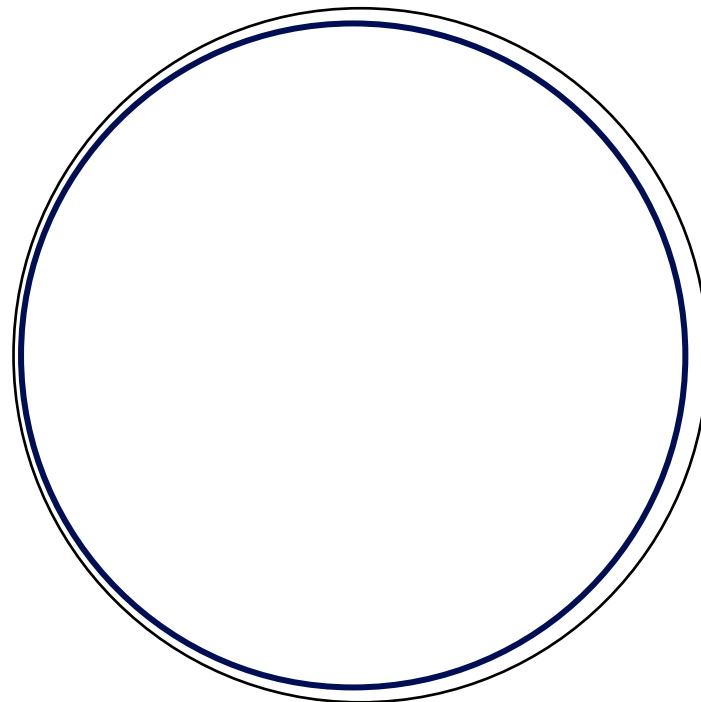


University structure



Field of study

Applied
Mathematics



Faculty

Faculty of Mathematics



University

Wrocław University of
Science and Technology



University authorities



**Prof. Arkadiusz Wójs,
DSc, PhD, Eng.**

RECTOR



**Prof. Kamil Staniec,
DSc, PhD, Eng.**

VICE-RECTOR
FOR EDUCATION



**Piotr Górski,
PhD, Eng.**

VICE-RECTOR
FOR STUDENT
AFFAIRS



University authorities



**Prof Andrzej Ożyhar,
DSc, PhD, Eng.**

VICE-RECTOR
FOR SCIENCE



**Prof. Tomasz Nowakowski,
DSc, PhD, Eng.**

VICE-RECTOR FOR ORGANIZATION AND
DEVELOPMENT OF THE UNIVERSITY



**Prof. Dariusz Łydźba,
DSc, PhD, Eng.**

VICE-RECTOR
FOR
COOPERATION



Student ID card

Student ID card is a document confirming your student status.
Remember to **extend its validity** every semester at the dean's office!

For first-cycle students it is
valid until **31 October**
In the year of obtaining the
graduation diploma.



Student discounts

Your student ID card entitles you to many discounts, for example:

51% discount on fees for using PKP transport until the age of 26.

50% in public transport fares.



How to write a good email?



University e-mail

Indeks@student.pwr.edu.pl

We use e-mail mainly to communicate with the lecturers as well as with the university authorities.

Hello, Hi

Dear {Title XYZ},

...

Sincerely,
XYZ



First weeks of study



The ABCs of studying

1

2



What does ECTS and the syllabus mean?

3

4



Why fields of study differ?

5

6



What to expect at classes?



How many exams?



University open to everyone



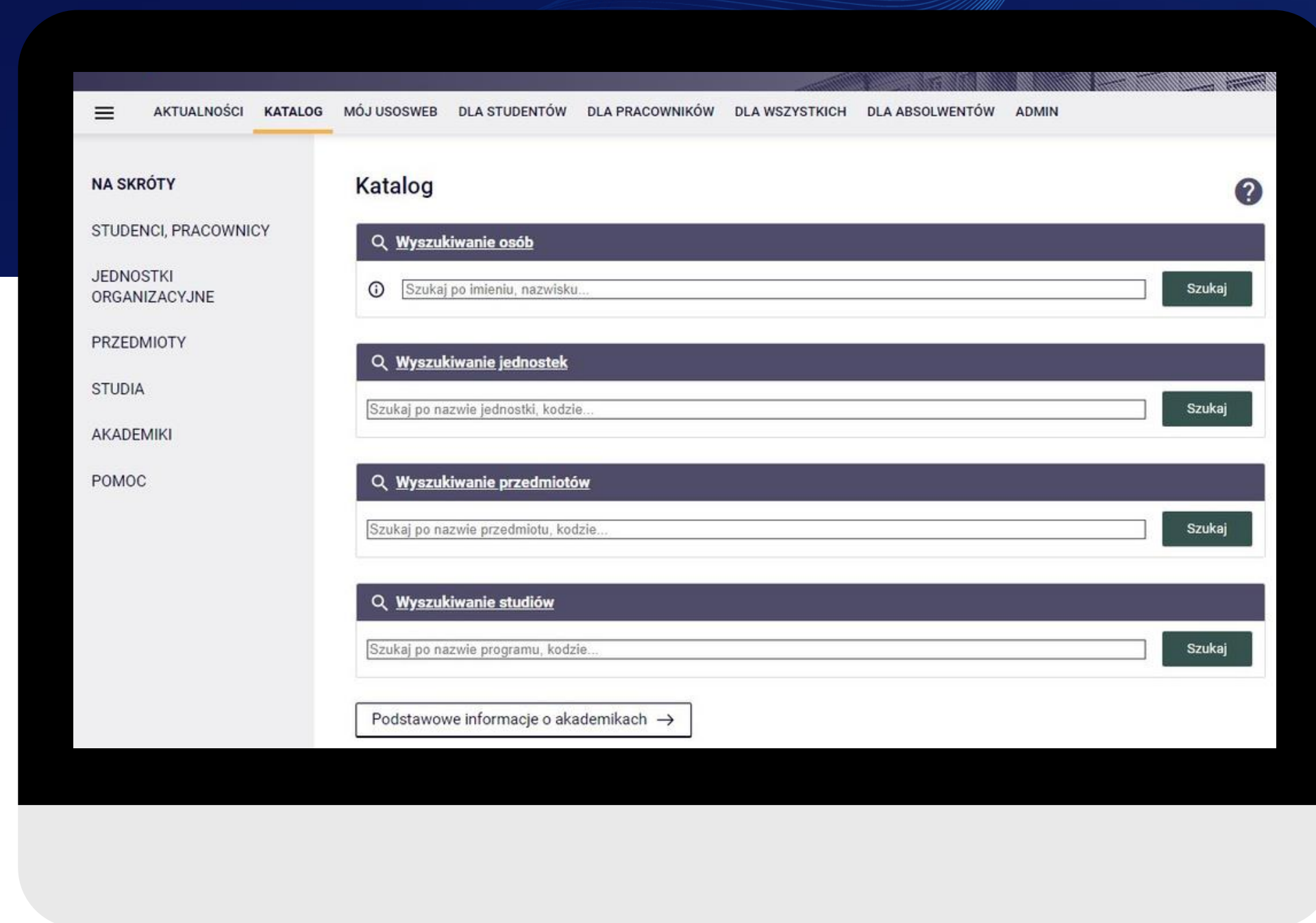
USOS – not so scary

What you'll find in USOS?

registration
for classes

exam
grades

overview
of classes groups



Study Information

- **OHS training - a mandatory course conducted using the e-learning method using the PWr ePortal.**
- **Library commitment card – a document necessary to borrow books from the library, submitted before defending the diploma thesis.**
- **Learning zone in D21 - using a student ID card after logging in to the website, it is possible to use the space prepared by the university, where you can sit between classes**



Programme of study



You can find it in USOS/on the university's website/
in the Public Information Bulletin
of the university

Programme of study

is a document defining the specificity of the field of study as part of the education cycle.

Why is it worth knowing the study programme?

This is where you will find all the requirements you need to meet to complete your studies.



Forms of classes



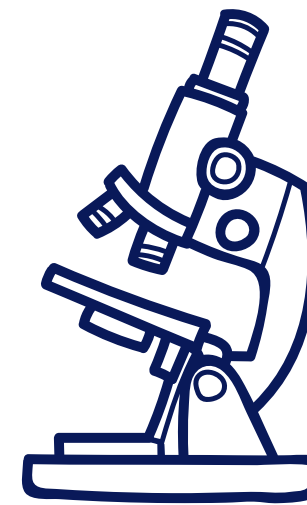
LECTURE

classes conducted with the participation of an academic teacher, usually optional



EXERCISE

classes carried out in order to prepare for the exam and develop the lecture content, they should take practical elements into account



LABORATORY

classes aimed at developing skills using specialized hardware or software

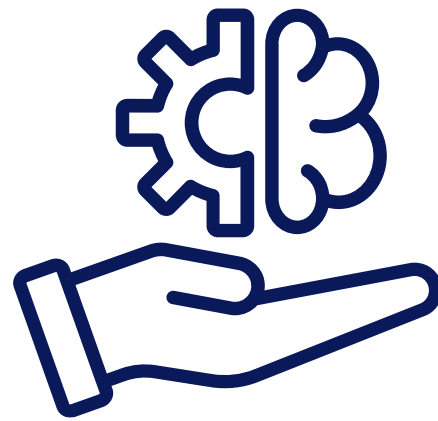


SEMINAR

classes in the form of a discussion on a selected topic



Forms of classes



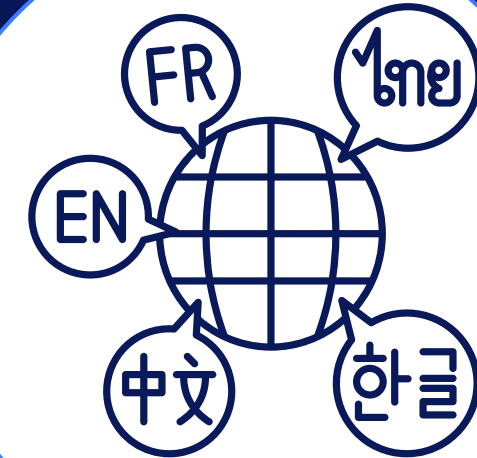
PROJECT

classes aimed at developing specific practical skills



DIPLOMA SEMINAR

preparatory classes to write a diploma thesis



LANGUAGE COURSE

classes aimed at learning a foreign language

Most classes at the university are **MANDATORY!**

If it is established that there is no participation
In compulsory classes, you **may be** crossed off
the list of students.



What you'll find in the course card?

1

**assessment methods
and criteria**
together with an
indication of the form
of the exam or
passing

2

didactic methods,
what the classes will
look like, how they
will be conducted

3

range of topics,
what you will learn
during the classes
and what you need to
know to get a
positive assessment

4

literature,
where to get the
knowledge necessary
to participate in
classes or pass

Course card is a document
published in USOS about
classes from a given course
– something like „class
regulations”.

Remember that the course
card binds not only
students, but also the
person conducting classes.



What are ECTS points?

ECTS are the points that are the measure **average student workload** required to pass the course.

One ECTS point corresponds to 25-30 hours of student work, both as part of the hours with the direct participation of teachers and independent work.

ECTS credits make it easy for students to **transfer** between universities and participation in **foreign exchanges**, as well as determine how much you can burden students with work within the framework of given classes.

Short forms of knowledge verification



Test

There can be single or multiple choice



Entry

It usually takes place at the beginning of classes and covers a small batch of material



Colloquium

It is a written form of checking knowledge, often requires a short or long written statement



Oral answer

It happens that the lecturers ask for oral answers from a selected batch of material



Support for people with disabilities

Moni

A scholarship for people with disabilities is one of the forms of financial assistance that can be obtained at the university.

Such a scholarship may be awarded to a student having:

- disability certificate
- certificate on the degree of disability
- certificate from the Social Insurance Institution (ZUS) on total incapacity for work, inability to live independently, partial incapacity for work.



During studies



Do it your way!

1



Where to get the money from for all of this?

3



How to overcome the crisis?

5



Will they help you find a job at the university??

7



How many times can you miss classes?

2



Is the apartment in the dorm for you?

4



What to do after classes?

6



Practice makes perfect

8

 **Individualization of studies**



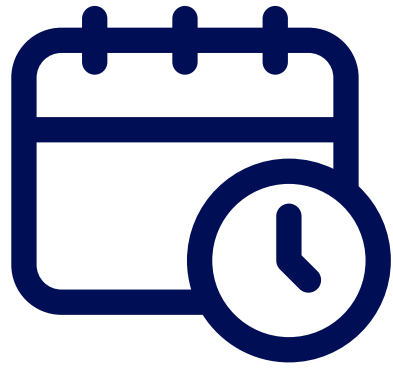
**Individual organization
of studies
(IOS)**



**Individual customization
of study
(IDS)**



Individualization of studies



It is a **modification** of the **study plan** when the student's life situation does not allow him to attend classes and pass subjects in accordance with the study plan.

**Individual organization
of studies
(IOS)**



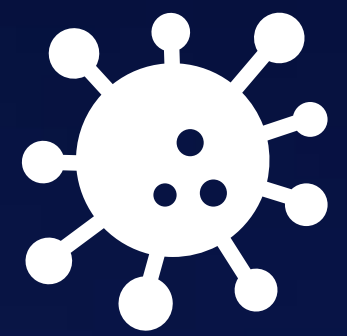
Individualization of studies



**Individual
customization
of Study
(IDS)**

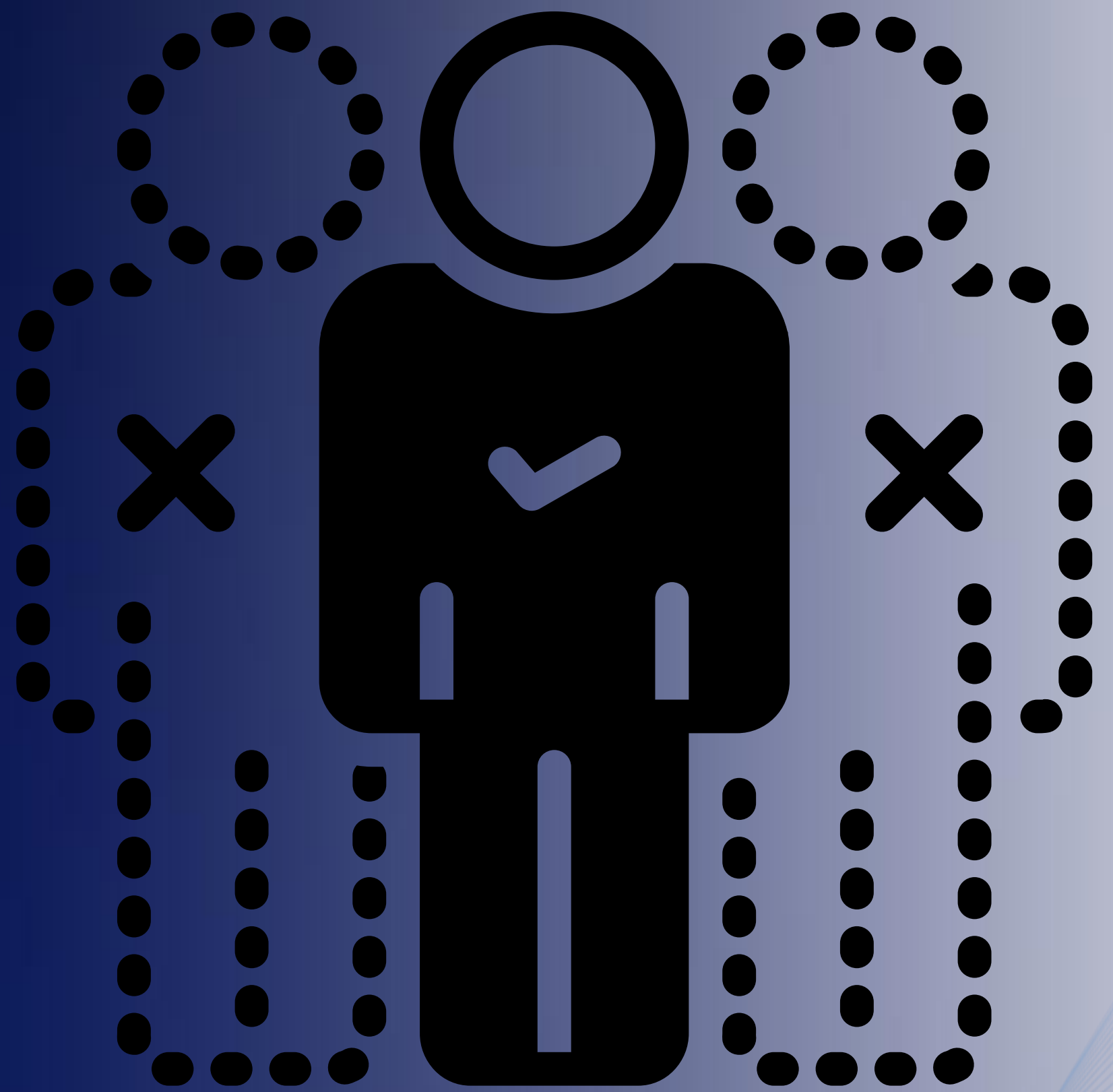
It is the **adaptation** of the **education process** to the individual needs related to student disability.

 **Class absences**



Disease

Random event





Material support



Social scholarship



Allowance



Student loan



Granting rules

A student studying simultaneously in several fields of study **may receive benefits in only one of them.**

Benefits are due for **no more than 12 semesters.**

A graduate of first-cycle studies **can not** apply for a scholarship at other first-cycle studies, and a graduate of second-cycle studies may not apply for a scholarship in any field of study.



Social scholarship may receive a student who is
in **difficult financial situation**.

The amount of monthly income per person in the student's family entitling to apply for social scholarship does not exceed PLN 1294.40 net (currently).

A social grant is awarded **per semester or academic year** and paid monthly for up to 10 months, and for up to 5 months when education lasts a semester.

 **Allowance**

An allowance is a one-time financial support that can be received by a student who has temporarily found himself in a difficult life situation.

The grant can be obtained up to **2 times per academic year.**

Examples of situations in which student can apply for an allowance:

- Theft
- Fire
- Flood
- Serious illness of the applicant or a member of his closest family;
- Death of an closest member of family



Student loan

A student loan is granted to students by a bank or a cooperative savings and credit union.

An application for a loan may be submitted by a person who:

- is **under 30** years of age;
- showed the average **monthly income** per person in the family for the year preceding the year of filing, which is less than or equal to the amount **determined by the Minister**.

The loan is granted for the period of study **only once**, no longer than for 6 years.

Student loan **repayment** is made in equal **monthly** installments and begins 2 years after graduation or earlier at your own request.

The loan may be **written off** partially or completely.



Student dormitories

9



- Average grade
- Revenue
- Distance from Wrocław

- Activities in student's organizations

https://prs.pwr.edu.pl/?page_id=510



Psychological support



<https://ddo.pwr.edu.pl/en/students/center-for-psychological-consultation>

Center for Psychological Consultation

Wróblewskiego 25 (dormitory T-22)

51-628 Wrocław

rooms 6.1, 6.2, 6.3 i 6.4

Strona Komfort PSRP



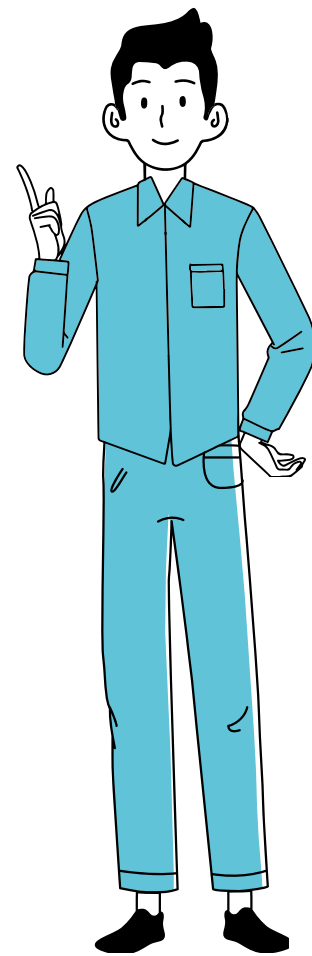


Students' organizations



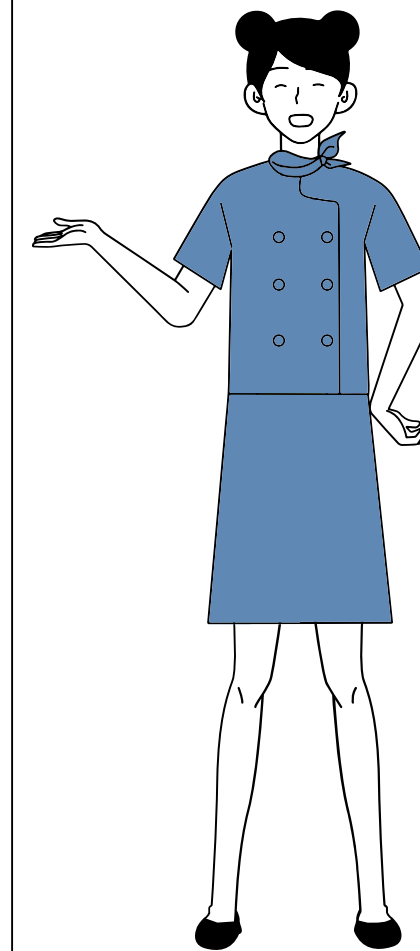
- Students have the **right to associate** in university students' organizations.
- A University may allocate funds for the implementation of activities of university students' organizations.
- Organisation should immediately **inform Rector** about its establishment.

Scientific circles



- They bring together students who want to conduct **scientific research** and gain **additional knowledge** within the field of science.
- They are under the care of an **academic teacher**.
- Scientific circles are covered by the same rights as students' organizations.

Students' Union



- **All students** of a given university form a students' union.
- Acts through its representatives in the **bodies**.
- Students' Union bodies are the only representative of all students of University.

The Students' Parliament of the Republic of Poland

It brings together **all** students'
unions in the country.

Represents student interests at
the **national level**.

Works by
the **Expert committees**.

PARLAMENT STUDENTÓW
RZECZYPOSPOLITEJ POLSK





Student internships

Full-time and part-time first-cycle students are required to complete internships. Internships should take place in free time from classes. The type, duration, method of crediting and the corresponding number of ECTS points are determined by the dean of the faculty on the basis of programme of study and study plans.





First examination session



Exams

1



**Commission
exam**

2



**Repeating
classes**

3

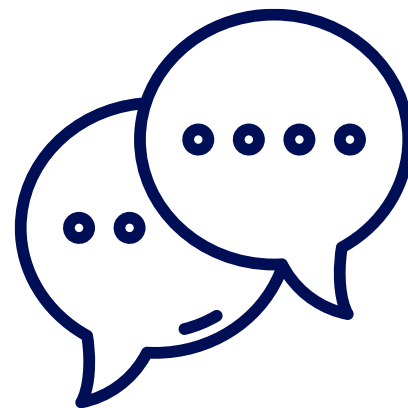


Exams

Exams are a form of **verification** of acquired knowledge, skills and social competences within the course, stage of study or the whole study.



Written exam



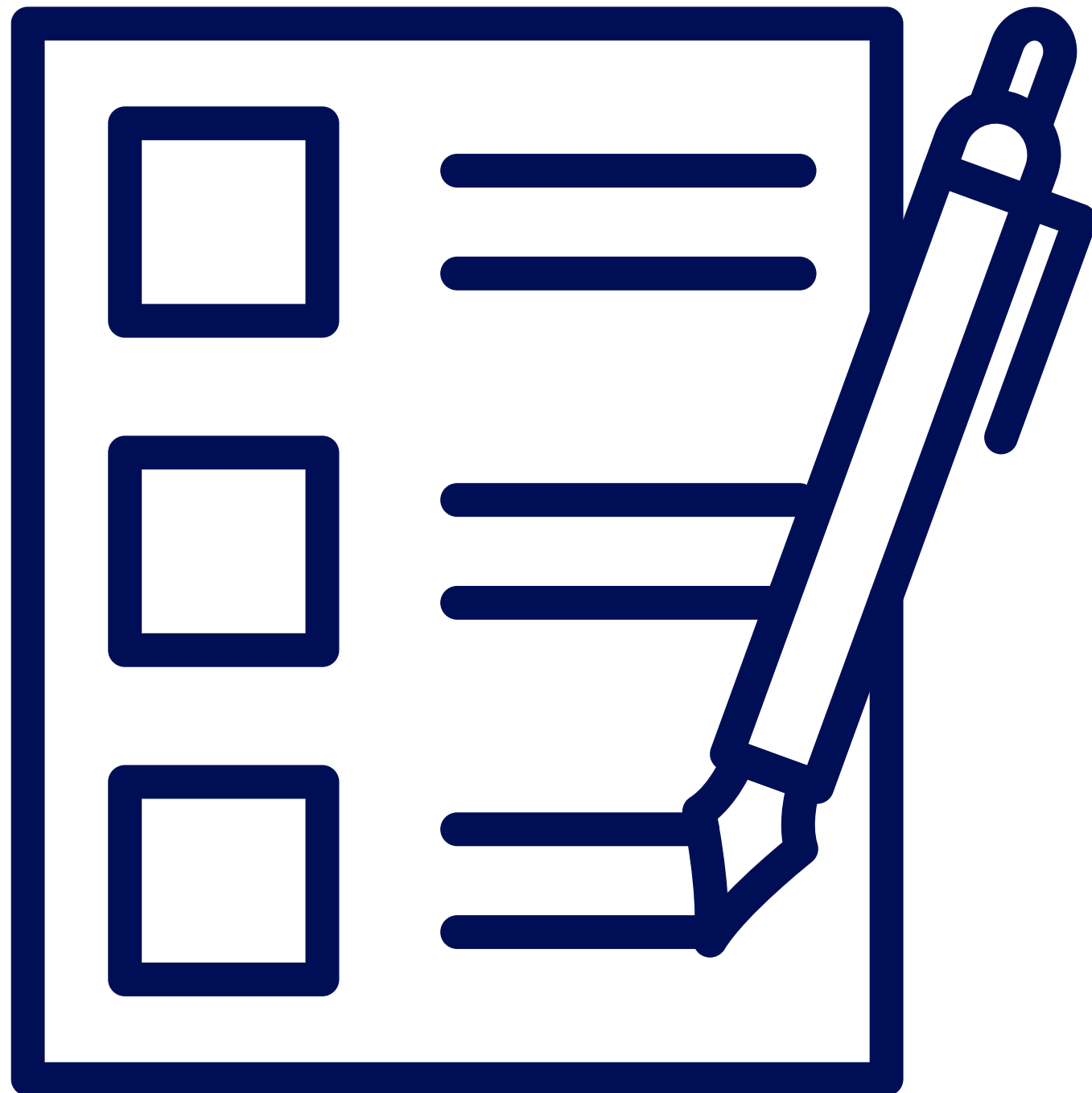
Oral exam



Project



Commission exam

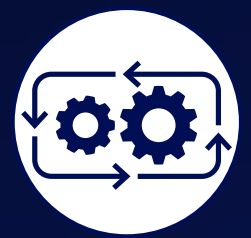


Student is entitled to participate in an exam the conduct of which **was not in accordance with the accepted rules.**

Student has the right to register his **spectator** for the commission exam., e.g. a representative of the students' union.

The student may submit no later than on the third working day following the date of announcement of the exam results by the examiner, a request to conduct the commission exam.

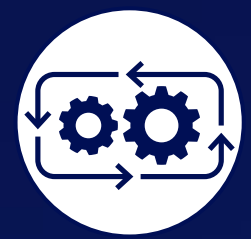
 **Second semester**



Rector's scholarship

1

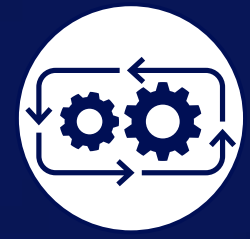
2



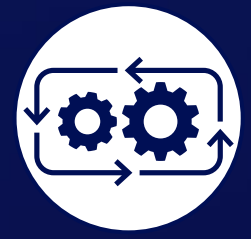
Other scholarships

3

4



Minister's scholarship



Break in study



Rector's scholarship

The rector's scholarship is a benefit for students who have achieved **outstanding** academic results and made **scientific, artistic** or **sports** achievements.

It is awarded to **no more than 10%** of students in a specific **field of study**.

At the Wrocław University of Science and Technology there are **3 amounts** of the scholarship, awarded depending on the student's place on the ranking list. The most rewarded are scientific achievements.



Rector's scholarship for first-year students

The rector's scholarship for first-year students
may be awarded to a student who is:

Laureate of the
International **Olympiad** or
laureate or finalist of the
Central Olympiad.

Medalist of at least
sports competition for
the title of Polish
Champion.



Minister's scholarship

The minister's scholarship is awarded to a student who demonstrates **significant achievements** in the scientific, artistic, sports or university-related area.

The scholarship is awarded for the period of the **one academic year**.

In order to submit candidacy student is obliged to send to the address dps@pwr.edu.pl from the individual student mailbox in which he/she submits his/her candidacy.



Study Break

Sick leave

An application should be submitted immediately after the occurrence of the reason, but no later than by the end of classes in the semester.

Dean's leave

Application for dean's leave for a given stage of study should be submitted in accordance with the schedule specified by the dean

Resumption of studies

Proceedings are conducted by the Rector or a person authorized by him.





Next semesters



Student do not live only to study!

1

2



How to move to another university?

3

4



Where to go to complain?

5



Travel educates



In college, you can rate the tutors!

Studying is not just learning!

At our University you will be able to take part in numerous **events** organized by the Students' Union!





Student Activity Days





Juvenalia





I < 3 PWr





And more...



czw., 21 wrz – 24 wrz

4S Leaders Camp: Wyspa Totalnego Przyw

Lewin Kłodzki · Lewin Kłodzki

Wydarzenie Samorząd Studencki Politechniki...



śr., 27 wrz – 28 wrz

Dni Zero 2023 - Bajeczny Wrocław

Politechnika Wrocławska · Wrocław

Wydarzenie Samorząd Studencki Politechniki...



niedz., 1 paź o 08:50

Szlakiem Samorządowca International Edi

Ślęża · Sobótka

Wydarzenie Samorząd Studencki Politechniki...



niedz., 18 cze

Turniej Ligi PWr

Tarczyński Arena Wrocław · Wrocław

Wydarzenie Samorząd Studencki Politechniki...



piąt., 2 cze

Escape sesja

Politechnika Wrocławska · Wrocław

Wydarzenie Samorząd Studencki Politechniki...



wt., 23 maj

Śniadanie z Rektorem 2023

Politechnika Wrocławska · Wrocław

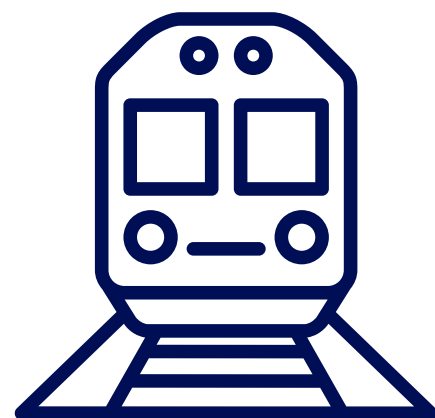
Wydarzenie Samorząd Studencki Politechniki...



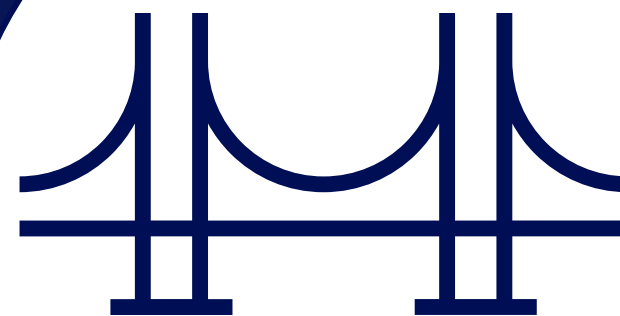
Academic exchange programs



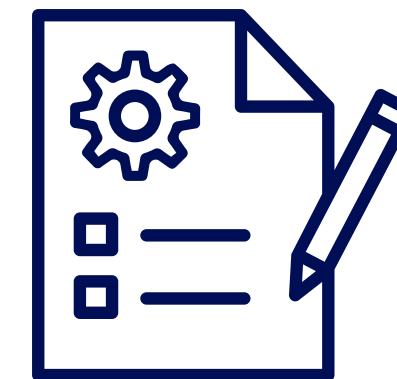
ERASMUS+



CEEPUS



MOST



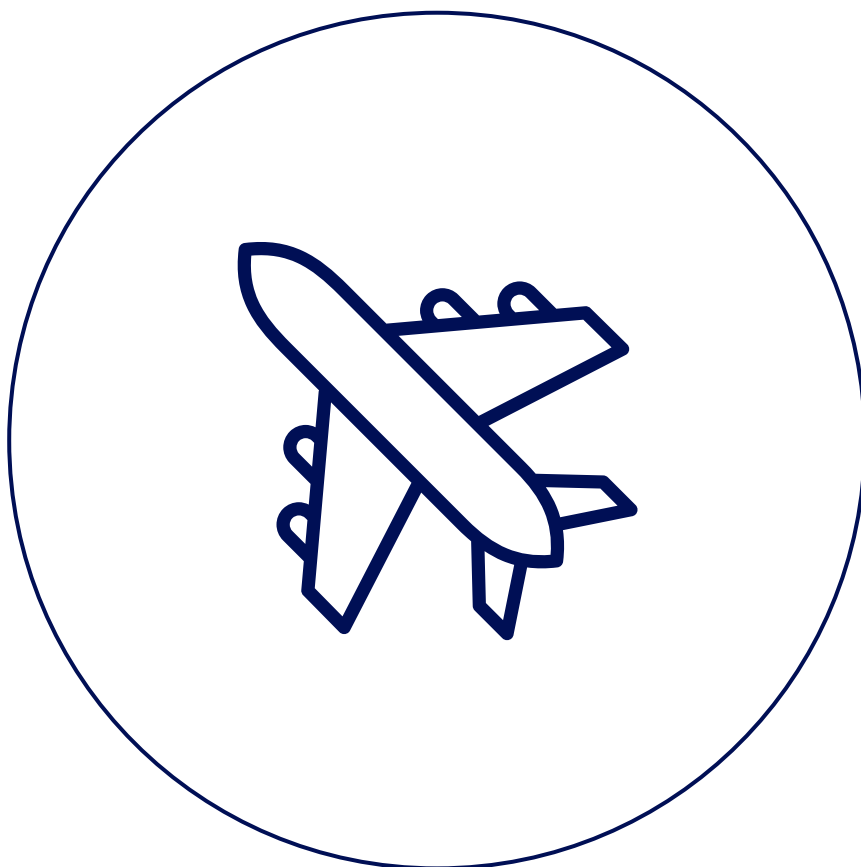
Bilateral agreements



Academic exchange programs

ERASMUS+

It is a trip to study or practice at a foreign university.

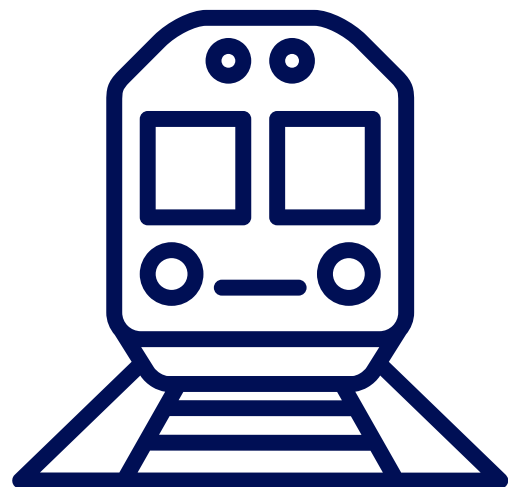


- The trip takes place for **one or two semesters**
- The trip is covered by a **grant** in the form of a scholarship, depending on the place of departure
- More information: <https://erasmusplus.org.pl/>

After choosing a university, contact the Erasmus+ coordinator at your faculty. Agree with the coordinator on the terms of the exchange and the documents required by the department.



Academic exchange programs



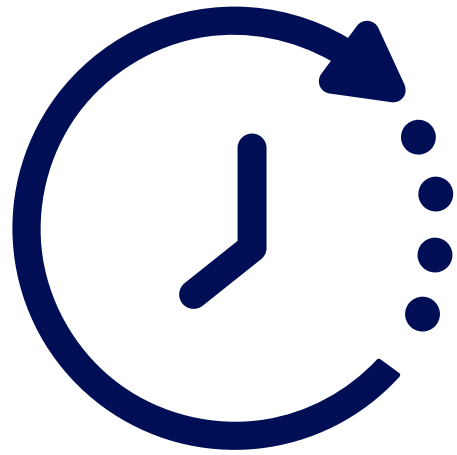
CEEPUS

CEEPUS

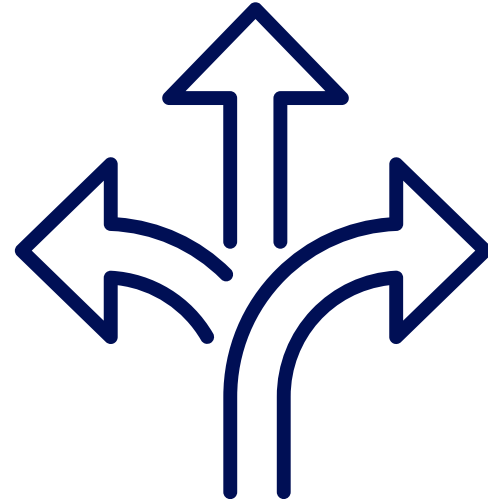
It is an academic exchange program in the field of education and professional development of students from universities that have joined the agreement. The program is covered by a scholarship.



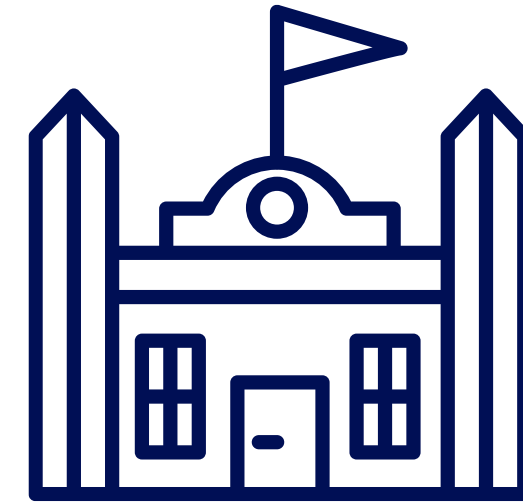
Moving



**Change of form of
study**



**Change of field of
study**



Change of university

Periodic surveys

Students may evaluate a teacher **at least once in an academic year** as regards the fulfilment of his/her educational duties.





End of studies

Time for a DIPLOMA!





Diploma

Specific **rules** for the graduation process can be found on the faculty's website.

The student receives a diploma within **30 days** from the date of graduation.

**What else do you
need to know?**



OMBUDSMAN FOR STUDENT RIGHTS

A **nationwide** body elected by the Students' Council of the Polish Students' Parliament.

He is responsible for respecting student rights and obligations.

Contact:

www.helpdesk.psrp.org.pl

rps@psrp.org.pl

Mateusz Kuliński



International Helpdesk

Supports foreign students with encountered problems.

Support is offered in **several languages** e.g. English, German, Ukrainian or .

Contact: international@psrp.org.pl



Students' Parliament of the Republic of Poland



sekretariat@psrp.org.pl



506 188 880



[/parlamentstudentowrp](https://www.facebook.com/parlamentstudentowrp)



[parlament_studentow_rp](https://www.instagram.com/parlament_studentow_rp)



[parlament_studentow_rp](https://www.tiktok.com/parlament_studentow_rp)

Thank you!

Julia Grzegorzewska



julia.grzegorzewska@pwr.edu.pl



[/SamorzadPWr](#)



[/samorzadpwr/](#)